

JOB #:

CUSTOMER:  
ENTOURAGE  
IN THE SUN

ADDRESS:  
407 N Riverside Dr,  
Pompano Beach,  
FL 33062

MUNICIPALITY:  
POMPANO BEACH

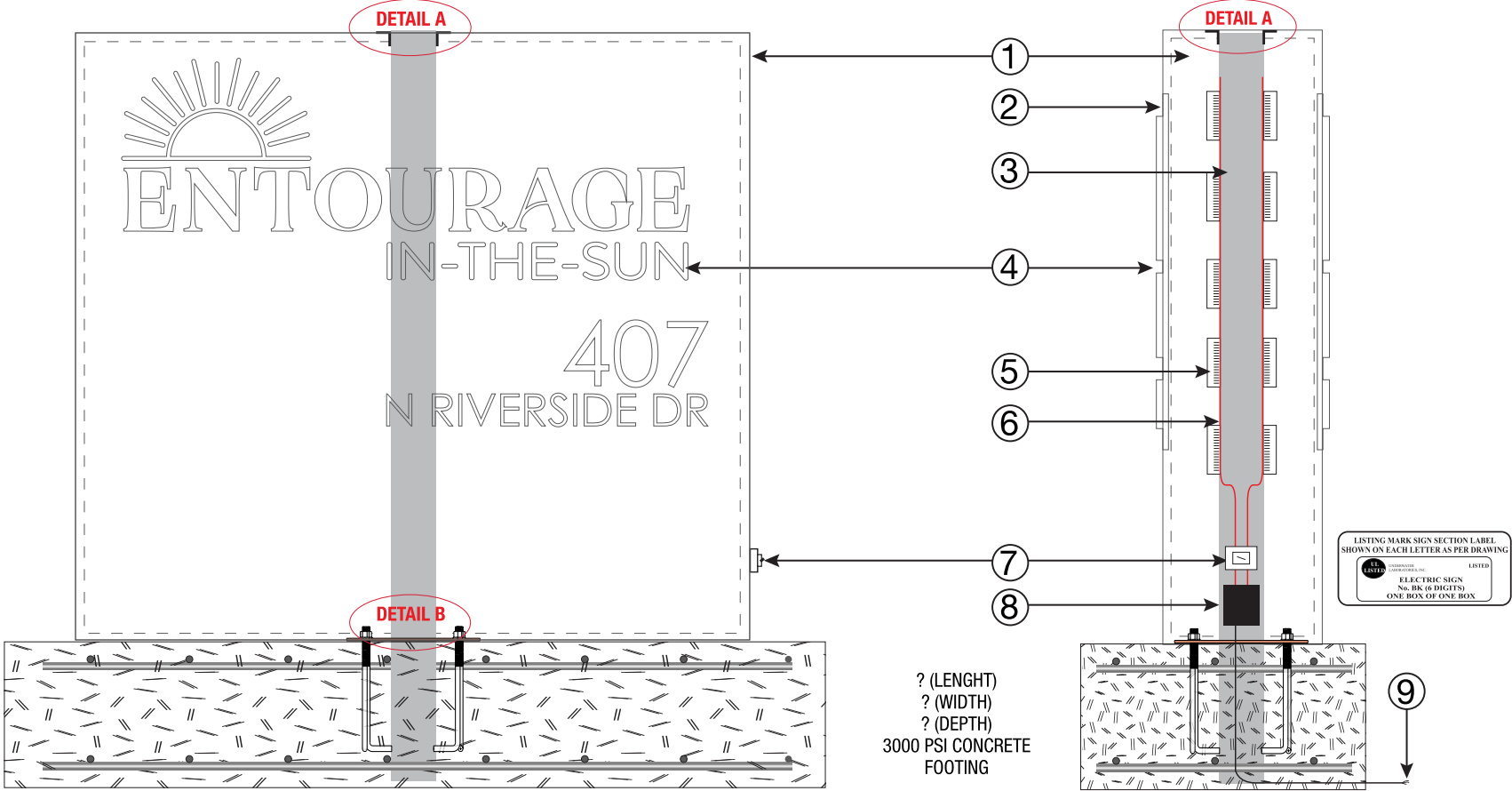
START DATE:  
08/04/2025

REVISION DATES:

REV 1:  
REV 2:  
REV 3:  
REV 4:  
REV 5:

NON ILLUMINATED ☐  
ILLUMINATED ☒  
  
SINGLE SIDED ☐  
DOUBLE SIDED ☒  
  
EXTERIOR ☒  
INTERIOR ☐

ILLUMINATED DOUBLE SIDED MONUMENT



- 1 0.063" ALUMINUM RETURN
- 2 0.090" ALUMINUM FACE
- 3 GRADE A STEEL POST
- 4 ACRYLIC PUSH THRU LETTERS
- 5 WARM WHITE LED
- 6 LOW VOLTAGE CABLE PREMIUM LED 18/2G
- 7 EXTERNAL SWITCH AT 20 AMP
- 8 LED POWER SUPPLY
- 9 EXISTING 120V/ 20AMP ELECTRICAL LINE

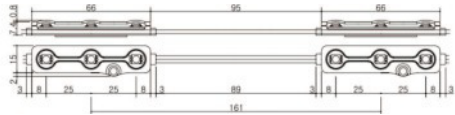
ELECTRICAL INFORMATION

- DEDICATED 20 AMPS CIRCUIT FROM ELECTRICAL PANEL 120 VOLTS 1/2" #12 THWN RIG WIRE
- (2) 12 VOLT DC (1.5 AMP EACH POWER SUPPLY) TOTAL: 3 AMPS - 60 WATTS
- ALL ELECTRIC COMPONENTS ARE U/L LISTED
- 20 AMPS LOCKABLE DISCONNECT SWITCH
- SIGN GROUNDED ACCORDING TO NEC 800.24 AND 800.7
- ALL COMPONENTS PAINTED AS PER CODE
- ALL MATERIALS & FASTENERS MEET 3004.4
- ALL ELECTRICAL COMPONENTS ARE U/L LISTED AS PER NEC 600.3
- CODES IN EFFECT ARE 2017 NEC & FBC 2020 , 7TH EDITION AND ASCE 7-16
- LIGHTING DESIGNATED FOR DUSK-TO-DAWN OPERATION SHALL BE CONTROLLED BY AN ASTRONOMICAL TIME SWITCH OR PHOTOSENSOR AS PER N.E.C 505.2.4

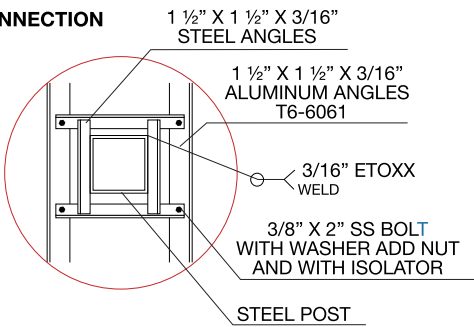
Item	Value	Unit
Power Dissipation	0.72	Watt
Forward Voltage	12	VDC
Forward Current	60	mA
Luminous Intensity	20000	mcd(Typ.)
Luminous Intensity	58	lm(Typ.)
Lumen / Watt	80.5	lm/W
CCT(k)	8000 / 10000	Kelvin
Wave length	450-455	nm
CRI	70	%
Viewing Angle	120°	°
LED / Module Pitch	25-161±5	mm
Size	72*17*8.2	mm
Weight	10	g
Max in series	50	EA
Operating Temp	-20 ~ 60	°C
Storage Temp	-30 ~ 70	°C
Waterproof	IP68	
Life Time	50,000	Hour
Cable	UL, AWM2468 300V/80°C	
Case Materials	UL, ABS-HI121, HB-class	

SPECIFICATIONS

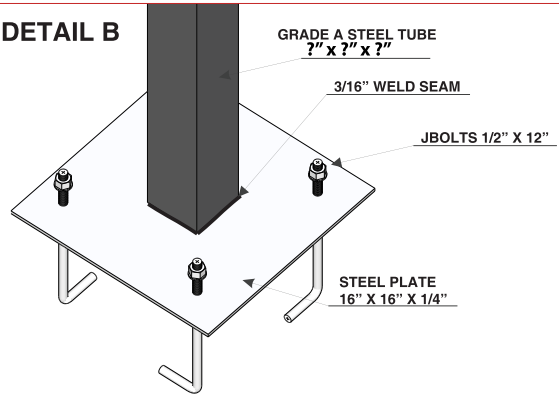
- Building Codes:
- 2017 FBC 6Th Edition
- ASCE 7-16, Wind Speed 170 MPH, Exposure =C
- Structural Steel Grade A as per ASTM A 500, Welding E70XX as per AWS last Edition
- Structural Aluminum T6-6061 as per ASTM B 308, Welding as per AWS D 1.2
- Concrete F'c = 3000 PSI at 28 days
- Reinforcing Steel Fy = 60 KSI as per ASTM A615
- All Anchors, Nuts and Washers shall be A-325 Stainless Steel grade 304 as per AISI 316
- Acrylic Sheet to be 0.236" Thickness Acrylite GP



DETAIL A  
CONNECTION



DETAIL B



Architectural Sign Designs  
14034 SW 140TH ST  
MIAMI, FL, 33186-5548  
T: +1 786 581 9654

CLIENT / PROJECT

DRAWING TITLE

CLIENT'S APPROVAL



APPROVED

DATE

INITIALS

SIGN NUMBER Architectural Signs Designs

VERSION / DATE

DRAWN / CHECKED

FILENAME

Reproductions of the whole or part of this document constitutes an infringement of copyright. The information, ideas and concepts contained in this document are confidential. The recipient(s) of this document is prohibited from disclosing such information to any person without the prior written consent of Architectural Signs Designs.

PAGE

AAC

PZ22-12000011

07/02/2024